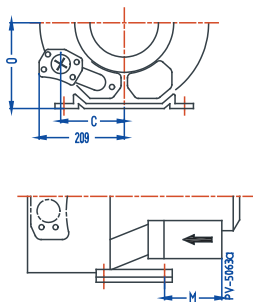


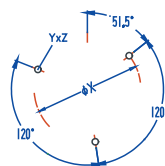
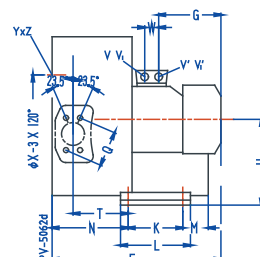
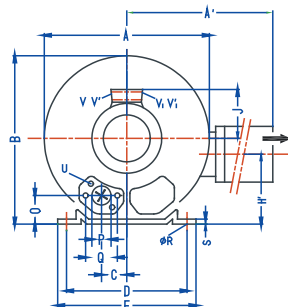
侧风道风机尺寸RHG520.,RHG720.,RHG740.(mm)



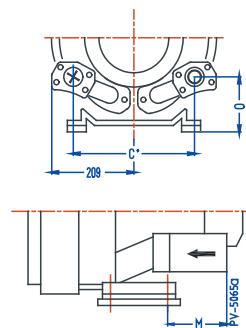
RHG 720.-...4.
-...5.



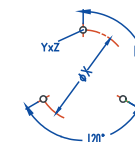
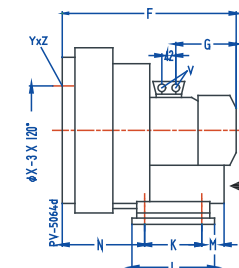
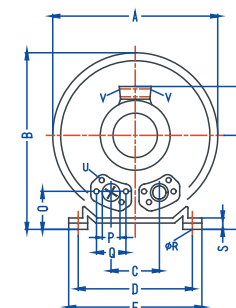
RHG 520.-...4. RHG 720.-...1.
-...5. -...2.
-...3.



RHG 740.-...4.
-...5.



RHG 740.-...3.



TYPE	Phases																									X-Holes					
型号	相位	A	A'	B	C	D	E	F	G	H	H'	J	K	L	M	N	O	ØP	Q	ØR	S	T	U	V	V'	V ₁	V' ₁	ØX	YxZ	W	
RHG 520-7H1	3~	372	411	371	60	260	295	465	190	175	144	135	115	155	98	171	48	55	83	14	4	116	M8x17	M32x1.5	M32x1.5	M32x1.5	M32x1.5	200	M8x20	51.5/171.5/291.5	42
RHG 520-7H2	3~							499	224																						
RHG 720-7H	3~	426	426	410	63	290	325	473	191	197	162	128	140	180	84	205	53		15	4.5	130		M25x1.5	M16x1.5	-	-	240	M10x20		29	
RHG 720-7H2	3~							496	188			135											M32x1.5	M32x1.5	M32x1.5	M32x1.5				42	
RHG 720-7H3	3~							526	209			148																			
RHG 720-7H4	3~				154	290		571	226			167			200																
RHG 720-7H5	3~																														

TYPE	Phases																					X-Holes			
型号	相位	A	B	C	C'	D	E	F	G	H	J	K	L	M	N	O	ØP	Q	ØR	S	U	V	ØX	YxZ	W
RHG 740-7H1	3~	420	410	125	-	290	325	526	209	197	148	140	180	84	205	153	55	83	15	64.5	M8x17	4xM32x1.5	240	M10x20	0/120/240
RHG 740-7H2	3~			-	308			571	226	257	167			200											
RHG 740-7H3	3~			-																					